

The Operator's Blueprint.

01

THE PARALLEL RESEARCH ARM.

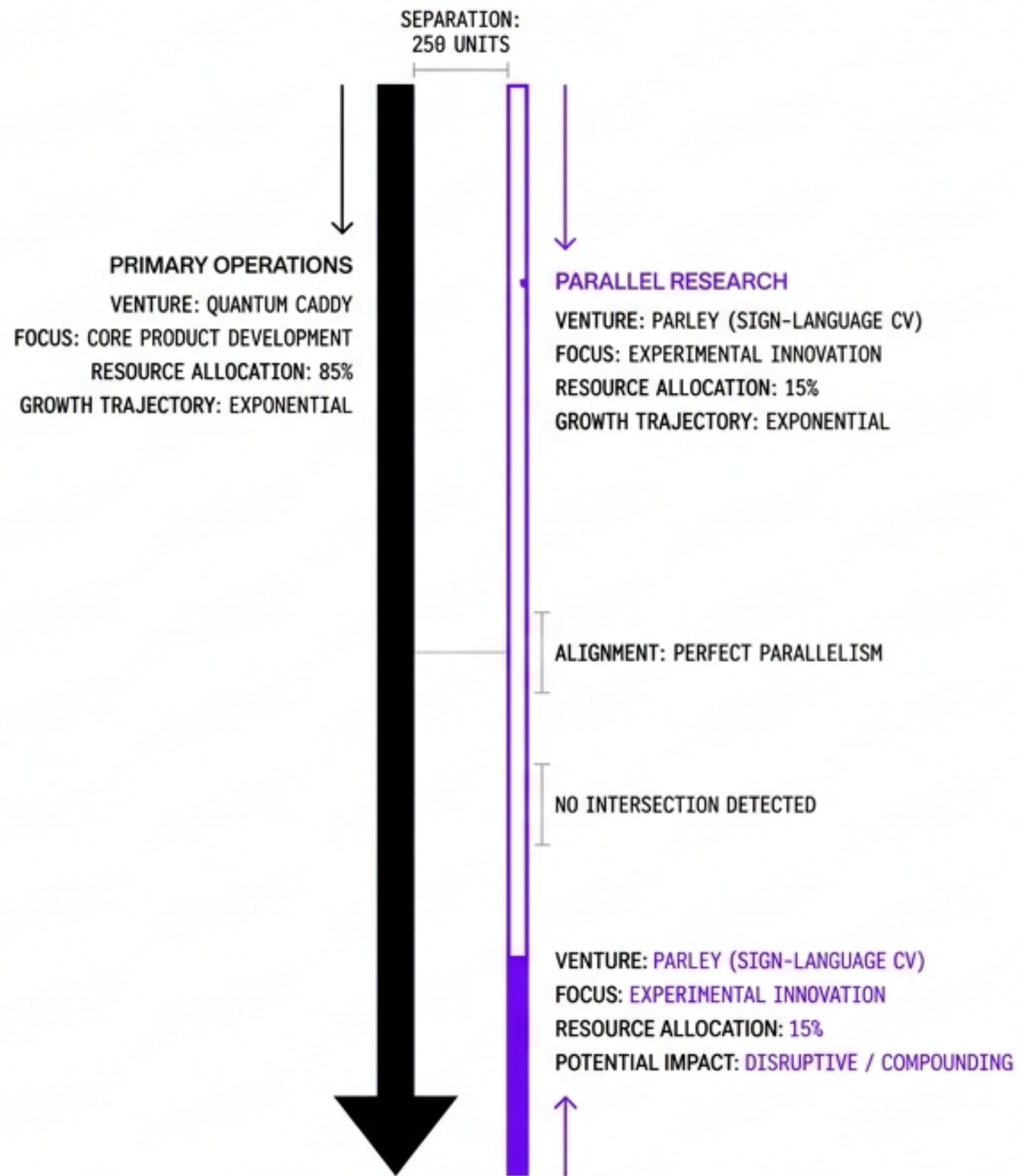
Case Study: Parley (Sign-Language CV) alongside Quantum Caddy.

02

DATE: 2024.18.26	PROJECT ID: 001.PARALLEL
STATUS: ACTIVE_RESEARCH	CLASSIFICATION: OPERATOR'S_BLUEPRINT_V1.0

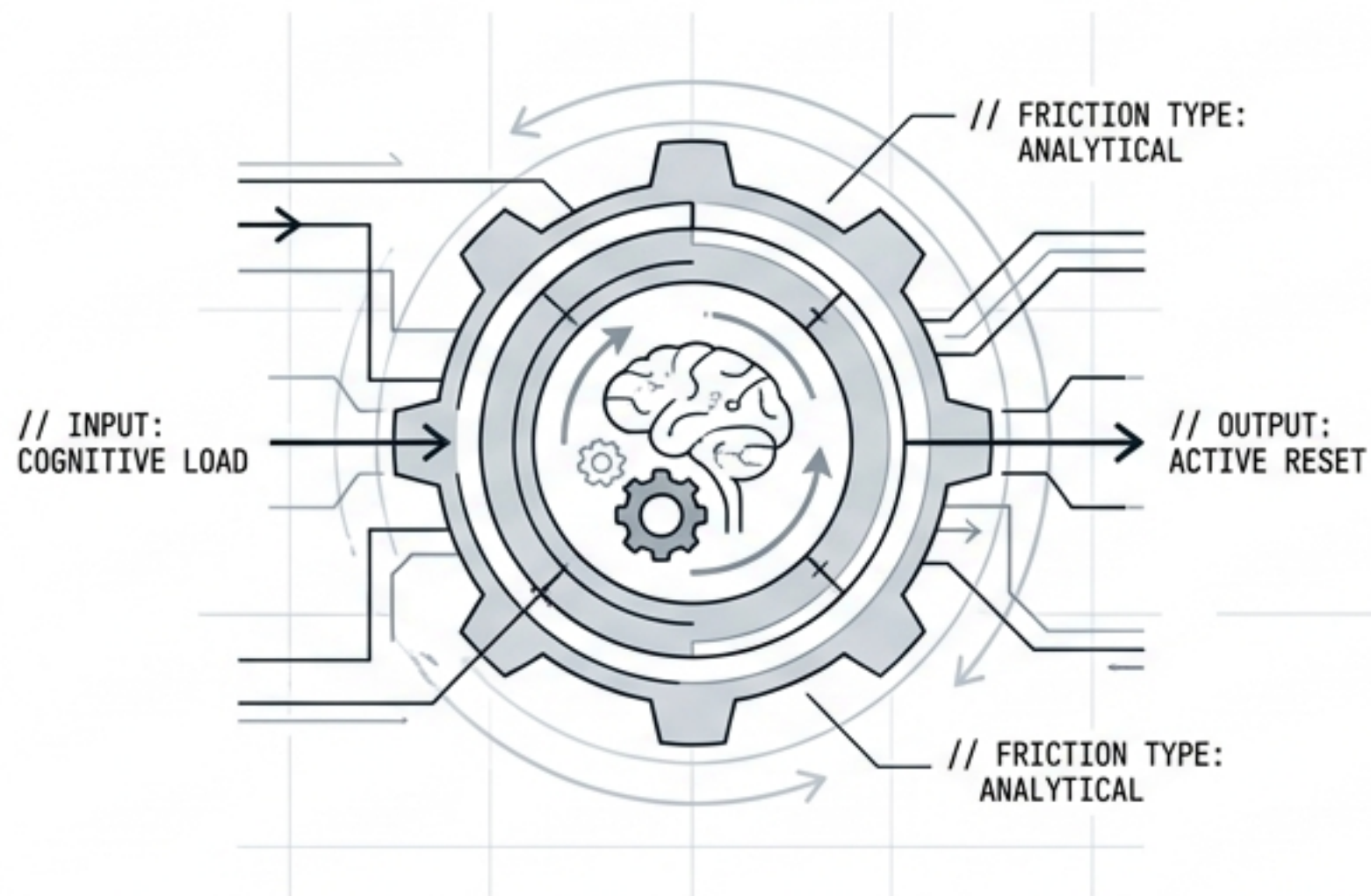
A parallel research arm can compound with your main work instead of cannibalizing it—but only under ruthless, specific conditions.

03



THE DUAL-ENGINE OF PARALLEL VALUE

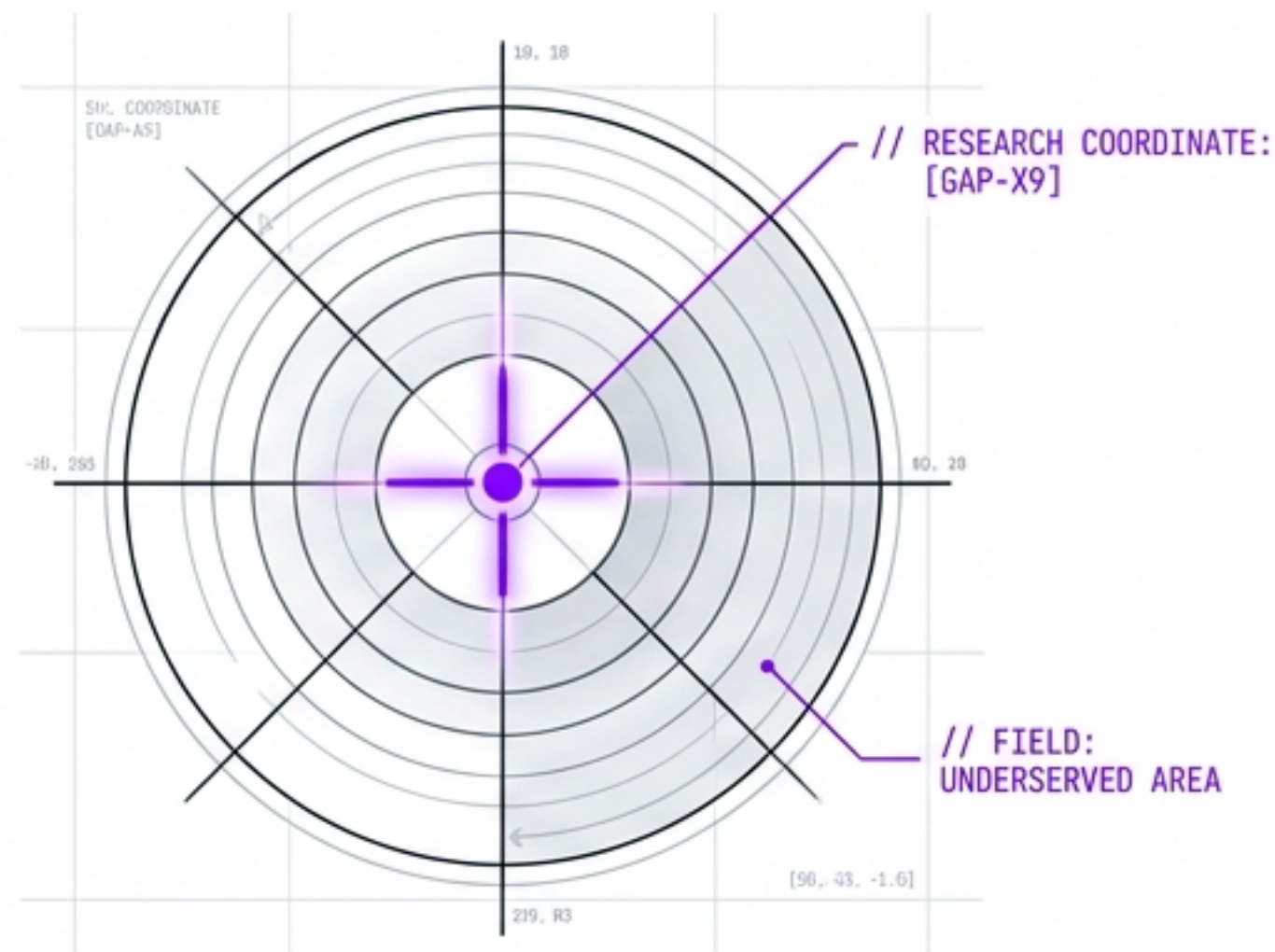
// THE OPERATOR'S BLUEPRINT // DUAL-ENGINE SCHEMATIC // PROJECT CODE: OPS-001-24



01: THE DECOMPRESSION CHANNEL

An active cognitive reset for the operator brain. A shift in the **type* of friction, rather than an absence of work.

// STATUS: ACTIVE FRICTION SHIFT // PRIORITY: PRIMARY OPERATIONS MAINTENANCE



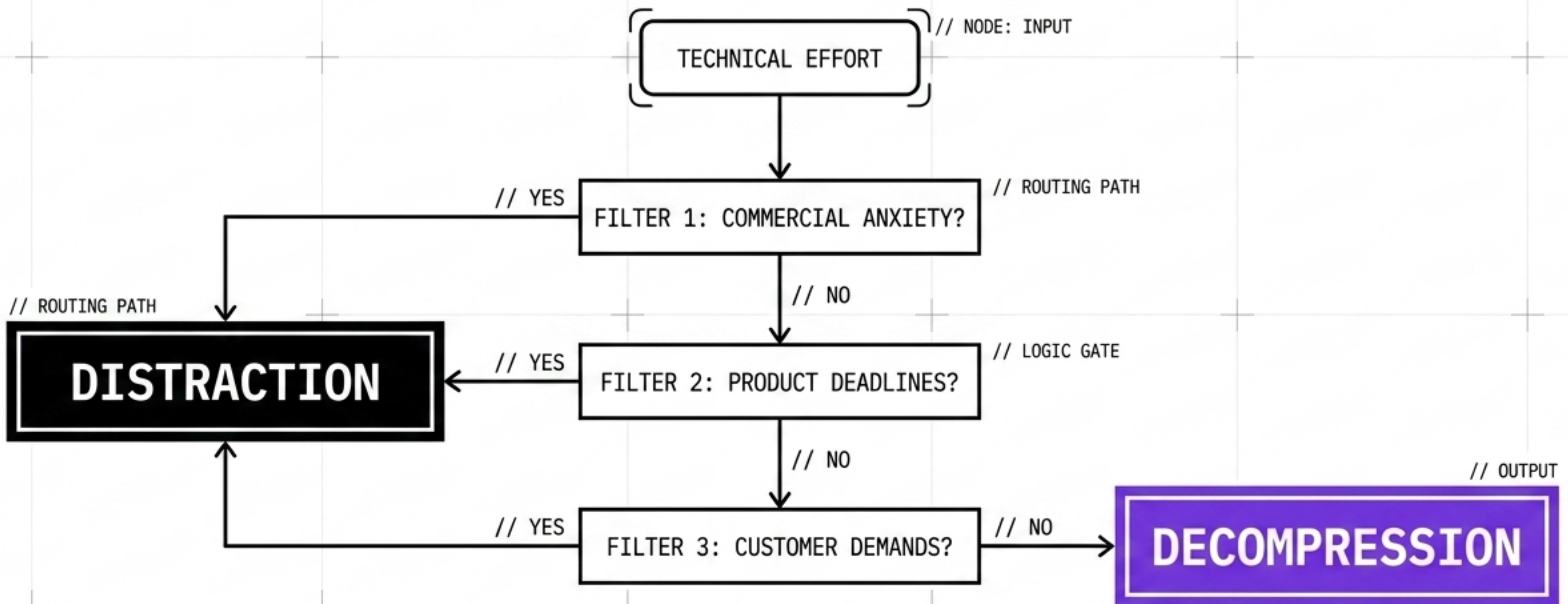
02: THE UNDERSERVED AREA

A legitimate gap in the research field where small, honest, rigorously scoped contributions matter far more than corporate scale.

// STATUS: PARALLEL VALUE TARGET // PRIORITY: HIGH-IMPACT, SCOPED CONTRIBUTION

DISTRACTION VS. DECOMPRESSION

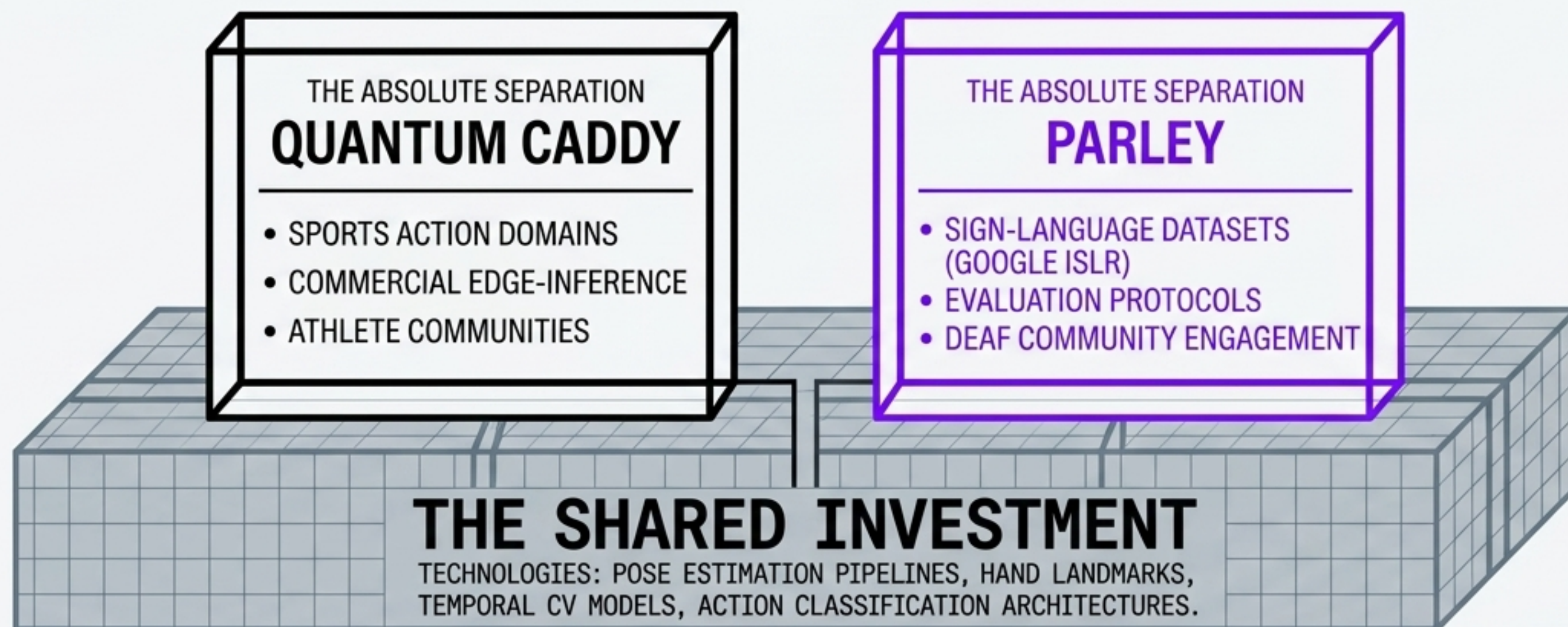
// It is not a vacation. It engages identical technical muscles but strips away the operational weight.



// If the work feels like rest despite the cognitive load, you have found a decompression channel.

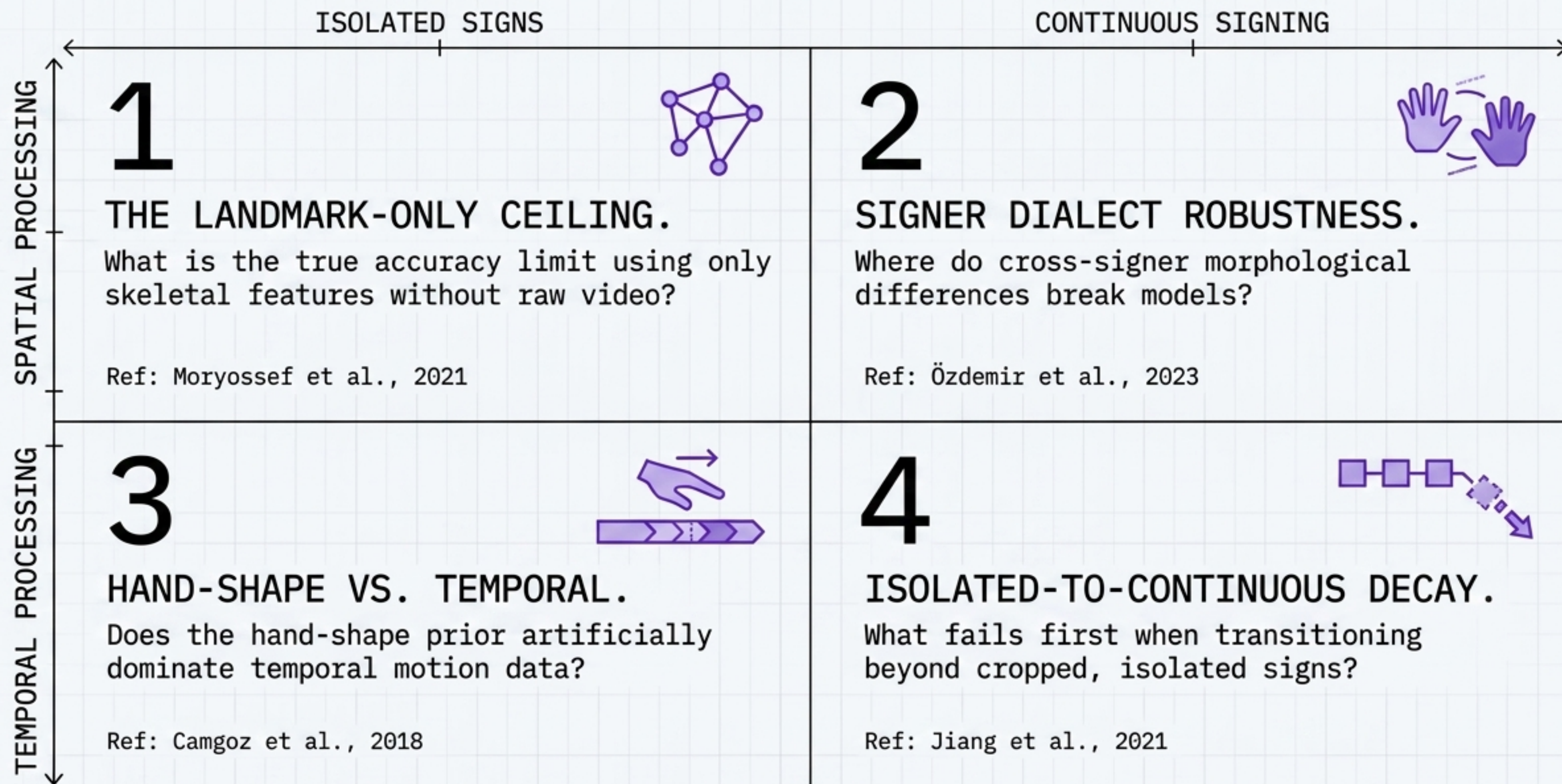
THE SUBSTRATE THAT COMPOUNDS

// **THE SHARED INVESTMENT:** Pose estimation pipelines, hand landmarks, temporal CV models, action classification architectures.



[THE SEPARATION AT THE TOP MAKES IT A PSYCHOLOGICAL BREAK.
THE SHARED SUBSTRATE AT THE BOTTOM MAKES IT AN ROI-POSITIVE INVESTMENT.]

THE 4 OPEN QUESTIONS IN SIGN-LANGUAGE CV



THE HONEST LEDGER: WHAT YOU GIVE UP

COST 01: Cycles.

Your weekends and evenings are officially claimed.

COST 02: Low-Energy Focus.

You forfeit the ability to completely “coast” or mentally check out during low-energy weeks.

COST 03: Single-Threadedness.

You are actively managing a context-switch. This requires strict personal discipline to prevent mental bleed-over into the main venture.

DISQUALIFYING CONDITIONS: WHEN NOT TO DO THIS

01



**The Core is
on Fire.**

Your main venture is in an active crisis, lacks product-market fit, or requires existential firefighting.

02



**Zero Substrate
Overlap.**

The technical foundation does not map back to your primary work. It is a pure hobby, not a compounding asset.

03



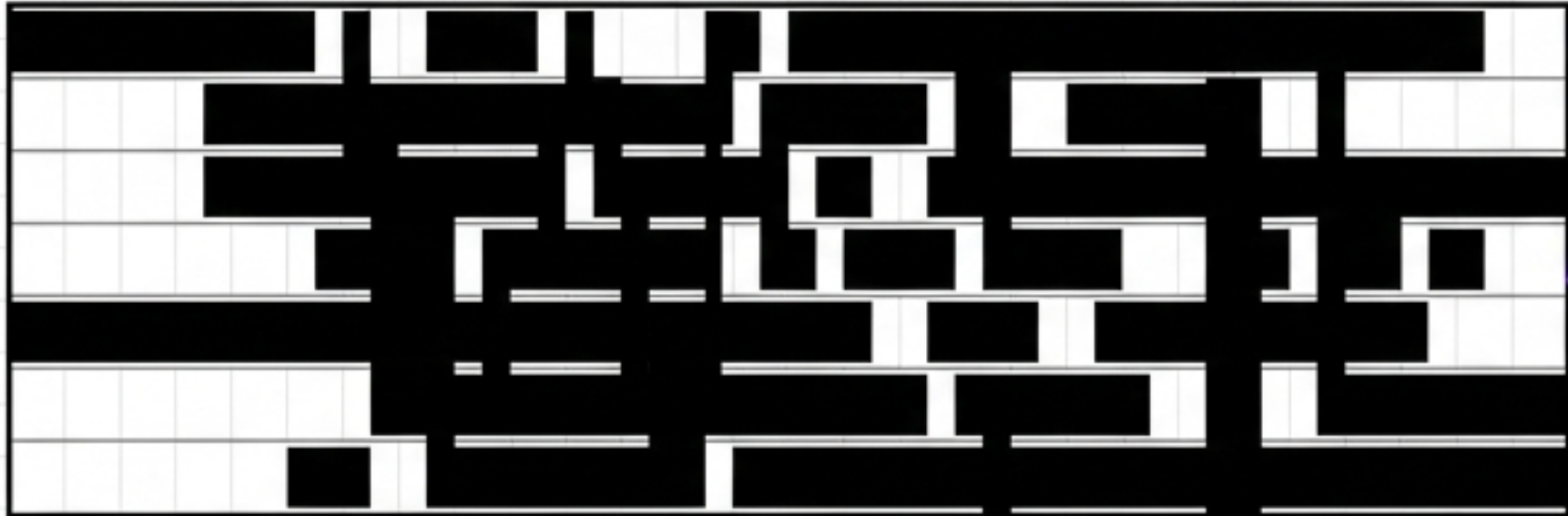
**Ego-Driven
Motives.**

You secretly want to launch a second startup or chase competitive leaderboards, rather than conduct quiet, scoped research.

TIMING PARLEY: THE HONEST CASE

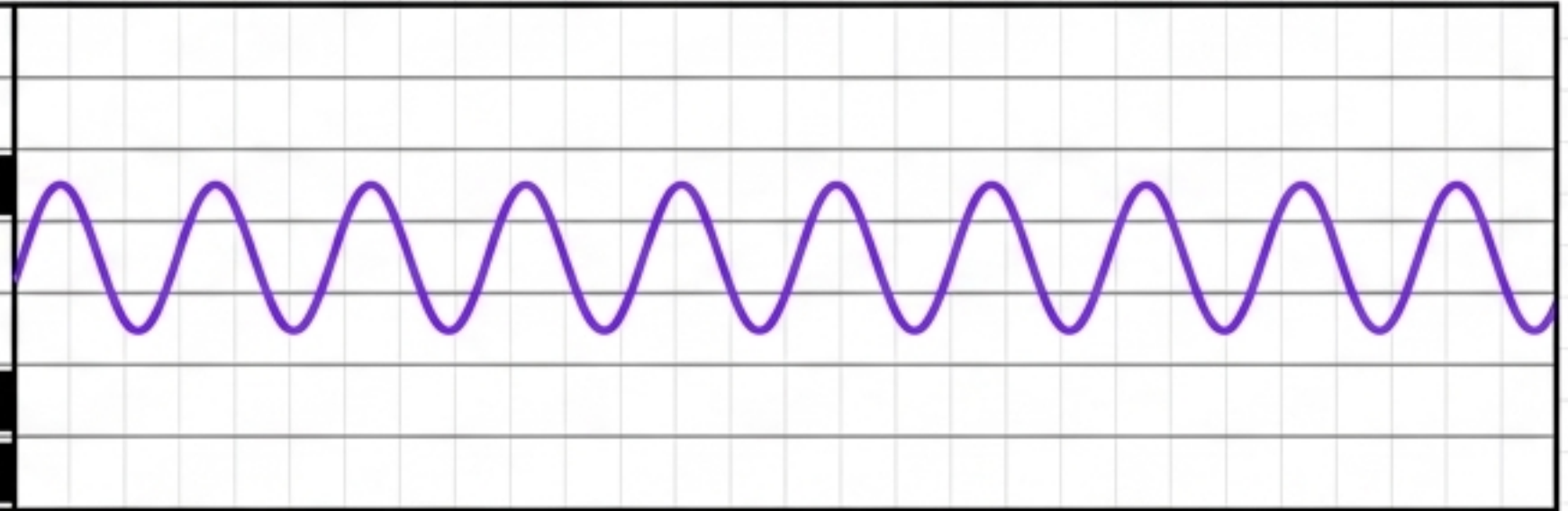
Q1 2026

Mile High Golf (MHG) launch crunch. The only correct answer to starting a parallel research arm was "No."



Q2 2026

The calendar physically opened. Quantum Caddy stabilized.



The parallel arm is a function of available capacity, never a competitor for required capacity.

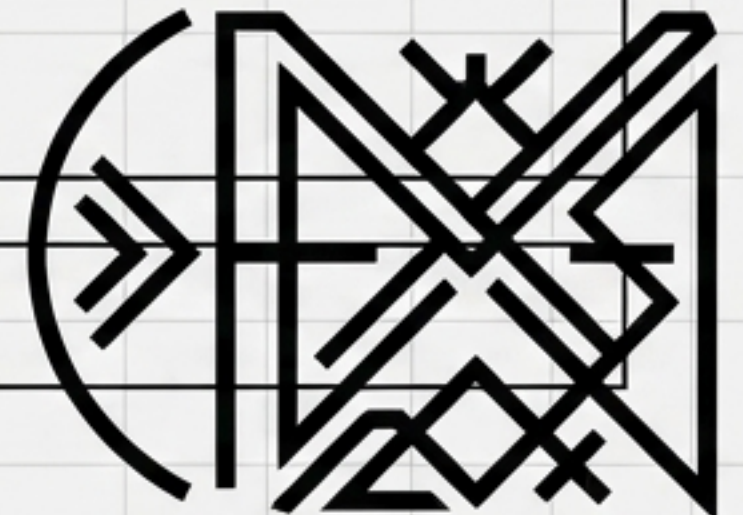
THE "WON'T BECOME A PRODUCT" RULE

RULE_01: Declare it in writing, before the first line of code is committed.

RULE_02: Parley is not a startup. It is applied research.

RULE_03: If it becomes a product, it competes with Quantum Caddy for cycles. This violates the entire premise of the decompression channel.

STATUS: Scope strictly held.



DEFINING SUCCESS (12-MONTH HORIZON)

● OUTPUT

6-8 published Kaggle notebooks driven by a slow, deliberate cadence.

● REPUTATION

Establish a public footprint for honest, applied CV research (error bars over accuracy theater).

● CREDIBILITY

A portfolio signal for future Quantum Caddy investors and engineering hires.

● THE COMPOUND

≥ 1 technique successfully developed that naturally flows back into Quantum Caddy (requires a separate, intentional decision).

WHAT SUCCESS DOES NOT LOOK LIKE

~~Chasing Kaggle Medals and
Leaderboard rankings.~~

~~Spinning out a commercial product
or seeking venture funding.~~

~~Publishing 10 notebooks in a
single month.~~

THE MAXIM: Slow beats fast. Cadence discipline is the entire point.

YOU HAVE THE CONSTRAINTS.

You have the thesis. You have the ledger. But how do you execute a rigorous research arm without dropping the ball on the main venture?

CHAPTER 2 COVERS THE HOW.

THE 5-GATE REVIEW SYSTEM. THE 7 INTERNAL AI AGENTS (HELM, CORTEX, LEXICON, PLANNER, BEACON, CIPHER, SCRIBE). THE RUTHLESS EXECUTION SCAFFOLDING.

